



Intel® Joule™ Module Available for One Day Design-to-Order Service

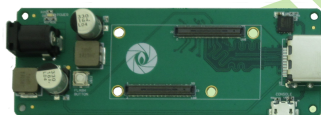
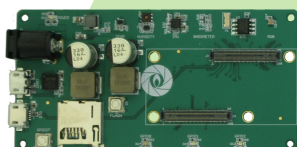
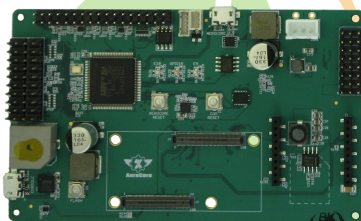
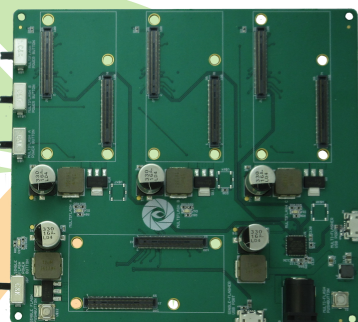
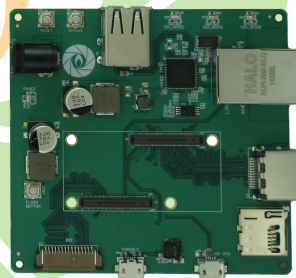
Geppetto® Guides IoT Makers to Production

The screenshot displays the Geppetto D2O platform interface. At the top is a 'Workspace' tab with a 'My Account' dropdown and a 'Designed by Gumstix' label. Below this is a 'Tabs & Toolbar' with icons for Home, New, Open, Save, Save As, Connections, Dimensions, Refocus, 3D Preview, Help, Suggestions, Show Price, and Module Info. The main workspace shows the 'Intel® Joule™ compute module connector' design. On the left, a 'Module Info' panel lists features: Two 100-pin Hirose connectors, 1.7 GHz Quad-Core processor, UEFI compliant BIOS, 3-4 GB RAM and 8-16GB eMMC, 1080p HDMI, MIPI CSI and DSI interface, USB 3.0 and USB 2.0 with OTG support, UART, I2C, PCIe, BlueF, Wi-Fi, and Real-time Compu. Below this is a '3D View' section with a '3D View' button and a '3D Previews' label. The central area shows a 'Board Layout' with various components like Mount Holes, Tactile Switches, Dual Stacked USB Type A, USB-Ethernet Module with Hub, 3.3V/1.5A Regulator, 5V/1.5A Regulator, Intel® Joule™ compute module connector, Native HDMI receptacle, microSD slot, COM to DSI Connector, Micro-B Jack, USB UART, and Micro-AB. An 'Export' button is at the bottom left, with an 'Export to .STL' label. On the right, a 'Drag & Drop Module Library' sidebar shows a search bar, a list of modules (Audio, COM Connectors, Intel® Joule™ compute module connector, \$15.00), and a list of categories (Connectivity, Headers, IO, LCD Display, Mechanical, Memory, Monitors, Network, Power, Power Connectors, Processors). The footer includes the Geppetto logo, 'dream, design, deliver™', copyright information, and the name 'Keith Lee'.

REDWOOD CITY, Calif. August 16, 2016 — [Gumstix®, Inc.](#), the leader in design-to-order embedded systems, today announced custom development tools for the newly released [Intel® Joule™ module](#) in the Geppetto® Design-to-Order (D2O) platform created by Gumstix® engineers. Using [Geppetto® D2O](#) Intel® customers can rapidly customize, design and manufacture small form-factor boards tailored to the Intel® Joule™ module. In addition, Gumstix is launching six Gumstix Expansion Boards for the Intel® Joule™ module, providing IoT makers multiple off the shelf expansion boards to jumpstart their Intel® Joule™ module development.



The announcement of the Intel® Joule™ module reinforces Intel's commitment to supporting Makers, Innovators and Entrepreneurs in the IoT market. The Intel® Joule™ module combines a 64 bit, Quad-Core compute engine with power management services, wireless connectivity and high speed I/O to accelerate users time to market. The module integrates compatible and complementary technologies while eliminating the need to select, procure and place discrete devices.

HTPC**IoT Sensor Board****AeroCore 2****Multi-Flasher****Workstation**



Different developers have different requirements, our goal with the Intel® Joule™ platform is to focus on providing developers with the building blocks they need for a successful project," said James Jackson, Intel General Manager, Executive Producer, "Now with Geppetto® D20, Gumstix is expanding these tools and providing IoT designers different I/O systems and the customized small form factors they need to rapidly design, manufacture and get to market.

The 6 new Gumstix expansion boards provide a multifunctional platform for the Intel® Joule™ module with a wide array of multimedia I/O, connections and sensors.

Board Type	IoT Application Feature
HTPC	Small Home Theatre PC
Interposer	Reuse One Module Multiple Times
Aerocore 2	MAV Powerhouse with LTE
Multi-Flash	Rapid upload of disk images to multiple COMs
IoT Sensor	Connect to barometer, 9-axis IMU, RGB, temperature
Workstation	Power station with HDMI, DSI, USB-Ethernet

"Having the Intel® Joule™ module in Geppetto® D20 system means design in one day, production in three weeks. We support innovation from IoT Makers and provide them the fastest path to production for their ideas," says Gordon Kruberg, Gumstix CEO, "with Geppetto® D20 the entire path from concept to manufacturing can be completed online in a one-day design session. We may be seeing the fastest adoption of any embedded architecture ever."

[Geppetto®](#) is a free online design tool and allows users to compare module cost during design, create multiple projects and share ideas. Gumstix engineers verify all Geppetto-manufactured devices before production. The initial total manufacturing cost is \$1999 with reduced rates for quantity discounts and repeat board spins. Gumstix products and quantity discounts are available at the [Gumstix online store](#).



gumstix



"Intel, the Intel logo and Intel Joule are trademarks of Intel Corporation or its subsidiaries in the U.S. and/or other countries."

###

About Gumstix, Inc.

As a global leader in design-to-order hardware and manufacturing solutions, Gumstix® gives its customers the power to solve their electronic design challenges with Geppetto® D2O -- the online design-to-order system-- and a broad portfolio of small computers and embedded boards. In addition to engineers and industrial designers, Gumstix® helps students, educators, and makers unlock their creative ideas to bring them to market. Since pioneering the concept of an extremely small computer-on-module (COM) with a full implementation of Linux in 2003, the company has grown to support over 20,000 diverse customers. Our systems have launched some of the world's coolest products - from phones to drones - on commercial, university, and hobbyist workbenches in over 45 countries. For more information, visit www.gumstix.com